

The NHS National Core Content

<http://www.library.nhs.uk/corecontent>

Claire Honeybourne
National Core Content Manager
Email: choneybourne@nhs.net
Tel : 07738488565

Priscilla Morley
National Core Content Administrator
Email: Priscilla.Morley@tsha.nhs.uk
Tel: 01623819352

A national project

- The idea for a national service was agreed early in 2002 and launched in April 2003
- The national core content was intended to replace the majority of the resources that were being purchased on a regional basis.
- The savings made are not just on costs but on staff time as well (both librarians and end users who do not have to retrain on different systems)

What is the aim of the NHS National Core Content?

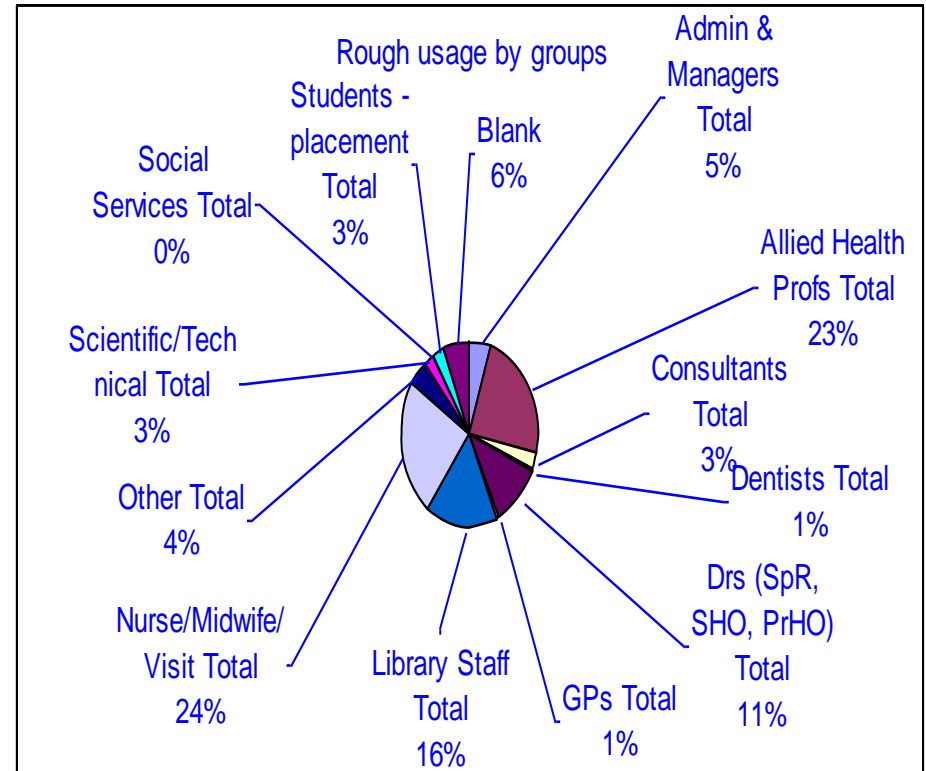
To deliver core electronic information services to NHS staff and students in England, to support education and training and better patient care.

The key objectives are:

- To establish a multi-professional electronic resource base for the NHS;
- To establish an efficient access management system for the resource base;
- To procure resources efficiently and cost-effectively;
- To promote equity of access to the electronic resource base;
- To promote effective and increasing usage of the resource base;
- To align the resource base with key NHS policy initiatives,
- To work closely with other national electronic libraries, e.g. the NLH and National Knowledge Service.

Who is it for?

- **The Core Content is for everyone working for the NHS in England.**
- Other groups eligible include walk in library users, students on placement, social services staff involved in patient care, the voluntary sector, and hospice staff.



NHS End users

Framfab usability testing of NLH



Ivan Mylnic, a locum GP

A busy primary care clinician, recently emigrated to the UK, who needs to access online information and services to keep up to date across a range of specialities



Jenny Simpson, a community midwife and part-time student

An experienced, practically minded clinician who works from various locations and needs straightforward advice whenever and wherever the problems occur



Mark Roberts, a general manager of a renal unit at a large hospital

A career focused administrator, who needs to keep abreast of the latest developments in the field, plus research career options



David Fuller, a specialist registrar at an acute hospital

A diligent oncology specialist, with a passion for teaching more junior staff, who needs to access trusted information but is wary of the Internet

HE End users

Who are they?

Accessing the knowledge base

Athens <http://www.athensams.net/myathens>

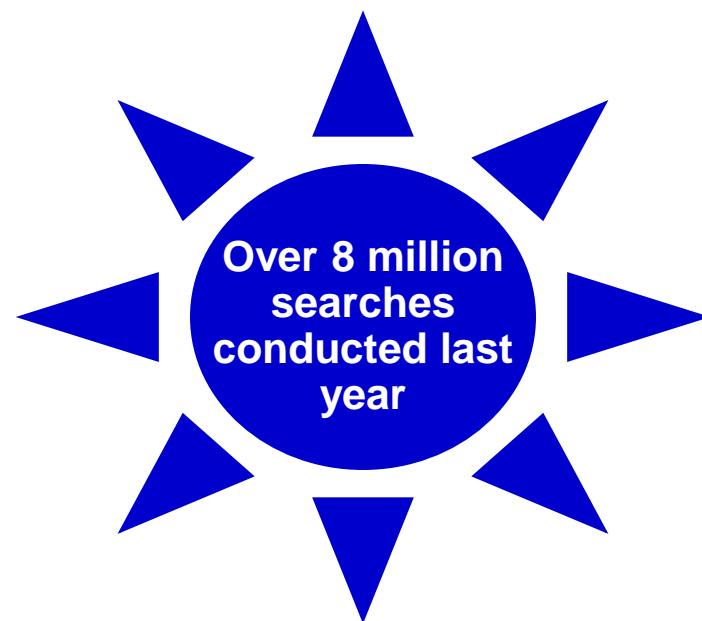
- Access to all resources is controlled by Athens. Athens ID are provided through online self-registration. My Athens shows users their local and national resources.
- Current trial in “Account activation” which will allow the creation of a “floating identity” to link several accounts under a single interface. This should support users that have HE and NHS accounts.
- 20% of NHS employees have an Athens password

The Collection

Thomson Scientific/ Dialog Datastar

- AMED, BNI, CINAHL, DH-DATA, EMBASE, MEDLINE, PsycINFO, Kings Fund.
- Users can follow a link to the full text of the journal article.
- Local libraries with additional electronic journals can add links.
- Local libraries can upload their local print holdings
- Local library contact details, opening hours and a map.

- 8 [Fulltext available at American Society of Clinical Oncology](#)
[Fulltext available at HighWire Press](#)
(MEDL) [Link to abstract/database record](#)
Phase II study of donepezil in irradiated brain tumor patients: [Journal of clinical oncology](#) : official journal of the American Society of Clinical Oncology. 2004;22(15):2755-2761. PMID: 1527-7755.
[Shaw-Edward-G](#), [Rosdhal-Robin](#), [D'Aqostino-Ralph-B-Jr](#), [Lovato-Jan](#)



The Collection

Thomson Scientific/ Dialog Datastar - developments

- Links to NLM priority journals
- Email alert for Reference manager.
- Users can export in xml and RSS.
- Citation Tool
- Document delivery – mediated requesting to local libraries and national inter-lending.
- Clinical filters
- Improved speed
- Currency through weekly ProQuest data

The Collection

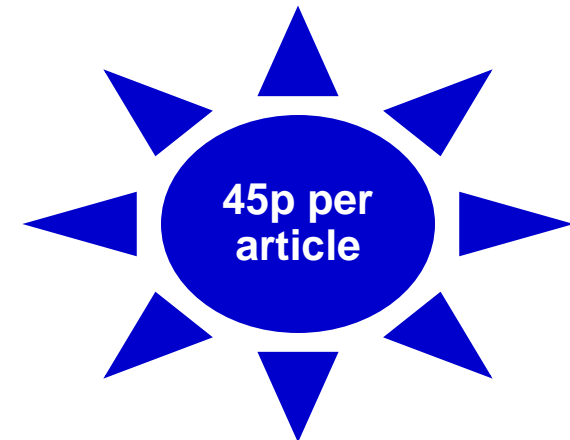
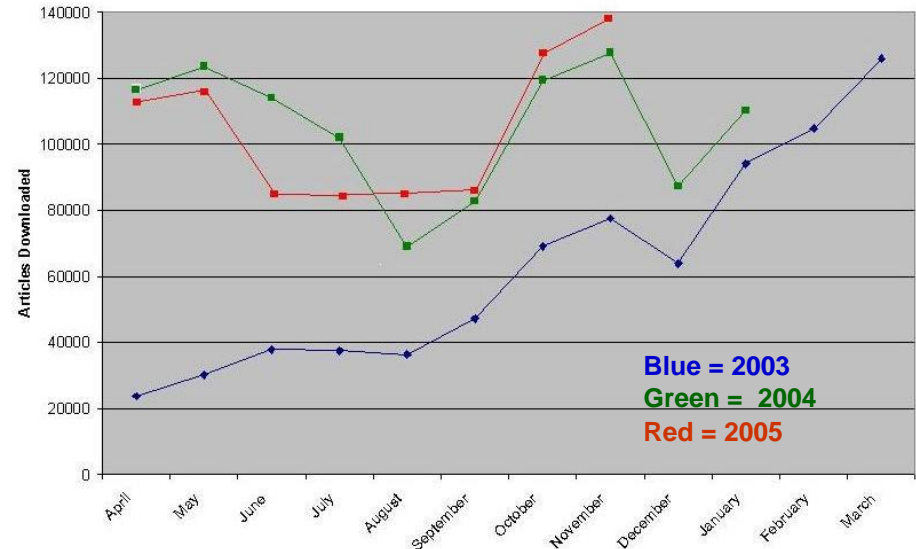
The ProQuest collection

Four collections: medicine, nursing, psychology and management consists of over 1500 e-journals.

Including important titles such as The Lancet, Nursing Standard and the New England Journal of Medicine.

All these journals are indexed in the Datastar databases and linked directly to the full text of the article.

Proquest Full Text Usage



The Collection

The ProQuest collection - developments

- Linking out from PubMed will occur by mid 2006.
- BIOMED Central open-access journals to be indexed,
- MyiLibrary e-books to be indexed
- Move to receiving direct publisher pdfs

The Collection

Coutts MyiLibrary

- 400 Mental Health Ebooks
- Entire output of the World Health Organisation.
- Each book has a unique URL so they can be added to library catalogues

Top ten books

- New Oxford Textbook of Psychiatry, Vol1
- Acute Mental Health Nursing
- New Oxford Textbook of Psychiatry, Vol 2
- Working with Serious Mental Illness
- Forensic Mental Health: Issues in Practice
- ICD-10 Classification of Mental and Behavioural Disorders
- Mental Health Nursing: An Evidence-based Approach
- Dementia Nursing: A Guide to Practice
- Child and Adolescent Psychiatry
- Obsessive-Compulsive Disorder: Theory, Research and Treatment

The Collection

Coutts MyiLibrary - developments

- MARC records available
- Improved search interface.
- RSS feeds for new books
- Link to SSE

The Collection

Biomed Central

Open access: the article is freely accessible via the Internet.

The author pays a one-off publication fee.

NHS has become a member of Biomed Central allowing NHS staff to publish articles without the author having to pay any additional fees.

Peer review process like traditional paper journals.

Tracked by ISI and receive impact factors in 2008. These journals include: BMC Immunology & BMC Neurology.

The Collection

Springer/ Current Medicine - Images.MD

50,000 high-quality images spanning all of internal medicine, all derived from Current Medicine's series of illustrated atlases. Each image is accompanied by informative text written by over 2,000 contributing experts.

218153 images were viewed between April 2004 and March 2005 and 6045 slidesets were created for this period

The Collection

New A-Z product

- A to Z list of journals and e-books merging national, regional and local purchases
- Create favourite journals lists
- Tailor personalised Table of Contents (ToC) feeds delivered by email and/or RSS via the NLH MyLibrary service.

The screenshot shows a web browser window titled "Welcome to TDNet! - NHS Connecting for Health". The address bar shows "http://www2.tdnet.com/frames.asp". The page content includes the "National Library for Health" logo and navigation links: HOME, SEARCH RESOURCES, NEWS & RSS, FOR LIBRARIANS, ABOUT NLH. Below this is a secondary navigation bar with links: About TDNet, Search TDNet, Terms Of Use, My TDNet, Home. A search box is present with a "Quick Search" label, a dropdown menu set to "Title", an input field, a "Partial Words" dropdown, and a "Go" button. The main heading is "Avon Gloucestershire and Wiltshire Strategic Health Authority". Below this is an "Alphabetical list of journals on this site" represented as a grid of letters from A to Z, with "All" in a separate box. A dropdown menu below the grid is set to "Avon Gloucestershire and Wiltshire Strategic Health Authority". A note states: "Please note that links and access permissions are customized for this site only. Links may not work properly if accessed from out of this IP designated range." On the right side, there is a "TDNet Electronic Journals Management" logo and a list of features: Quick search a journal title, Browse journals A-Z, Click "Search TDNet" for articles, Define personal profiles, Order e-mailed alerts of new issues. At the bottom right, it says "TDNet helps E-Journals realize their potential - a constantly updated and easily accessible source for valuable information. Usage of this system is subject to the TDNet 'Terms of Use'. © All Rights Reserved." The footer contains "Update: Mar 10 2006 7:53AM Software Version: 2.0", "Administrator Login", "Best viewed with Internet Explorer 5, Netscape 4.7 and above", and "© Crown Copyright 2005 | Usage & Privacy policy | Feedback". The browser status bar at the bottom shows "Opening page http://www2.tdnet.com/Common/Home_page.asp..." and "Internet".

Integration with NLH

Wireframe title: My Library - User logged in

November 2005

Localisation/ Personalisation :
 The NHS Single Search Engine allows end users to search all national resources in one place. 2006 will see local resources added to the SSE.

MyLibrary is a personalised space within NLH that will allow end users to select their favourite national and local resources producing a personalised portal to a relevant knowledge base.

National Library for Health

[sitemap](#) | [about NLH](#)

Home Search Resources News & RSS My Library For Librarians

MY HOME LIBRARY
[Change my Home Library](#)

Addenbrooke's Library

The Medical Library (Cambridge University Library)
 Box 111
 Addenbrooke's Hospital
 Hills Road
 Cambridge
 CB2 2SP
[view map](#)

Tel: 01223 336 750 (internal 84-36750)
 Fax: 01223 331918

email: library@medschl.cam.ac.uk

Addenbrooke's Links

Library Portal
www.medschl.cam.ac.uk/library/library.html

OPAC
www.medschl.cam.ac.uk/library/library.html

Trust Portal
www.medschl.cam.ac.uk/library/library.html

Addenbrooke's News

Rosie midwives win national award for excellence - 23 Nov 2005

Addenbrooke's A&E ambulance courtyard gets a facelift - 21 Nov 2005

New interactive CD for healthcare scientists launch at Addenbrooke's Hospital - 18 Nov 2005

You are logged in as **NHSJSMITH001** [logout](#)

[RSS feeds \(14\)](#)
[Web Links \(24\)](#)
[Saved Search criteria \(0\)](#)
[Saved Search results \(3\)](#)
[Search Profiles \(5\)](#)

[Edit your profile](#)

LIBRARIES IN MY LOCALITY

Addenbrooke's NHS Trust: Fulbourn PGME Library
[email](#) [map](#) [details](#)

Homerton Health Library, Cambridge
[weblink](#) [email](#) [map](#) [details](#)

MY FAVOURITE LIBRARIES

Alzheimer's Society
[weblink](#) [email](#) [map](#) [details](#)

Chelsea and Westminster Hospital
[email](#) [map](#) [details](#)

Gordon Hospital
[email](#) [map](#) [details](#)

MY WEBLINKS
[Edit my weblinks](#)

Conjunctivitis (inflammation of the eye)
 Lorem ipsum dolor sit amet, consetetur sadipscing
www.netdoctor.co.uk/diseases/facts/conjunctivitis.htm
[remove](#) | [edit](#) | [email link](#)

Bacterial Conjunctivitis - Patient UK
 Stet clita kasd gubergren, no sea takimata sanctus est
 Lorem ipsum dolor sit amet.
www.patient.co.uk/showdoc/40024912
[remove](#) | [edit](#) | [email link](#)

Conjunctivitis, allergic and infectious
 Duis autem vel eum iriure dolor in hendrerit in
 vulputate velit esse molestie consequat,
hcd2.bupa.co.uk/fact_sheets/html/conjunctivitis.html
[remove](#) | [edit](#) | [email link](#)

Clinical Evidence: Eye disorders
 Stet clita kasd gubergren, no sea takimata sanctus est
 Lorem ipsum dolor sit amet.
www.clinicalevidence.com/ceweb/conditions/eyd...
[remove](#) | [edit](#) | [email link](#)

bacterial conjunctivitis - GP Notebook
 Duis autem vel eum iriure dolor in hendrerit in
 vulputate velit esse molestie consequat,
www.gpnotebook.co.uk/cache/-46858221.htm
[remove](#) | [edit](#) | [email link](#)

MY NEWS
[Edit my news feed list](#)

NHS UK Gateway [see more](#) | [edit news feed](#)

Campaign launched to raise awareness of alcohol link to mouth cancer
 Too few people are aware that heavy drinking can cause mouth cancer, says a new survey by Cancer Research UK to mark the launch of an official awareness campaign.

Consulting an NHS dentist is getting easier
 More patients will now be able to consult an NHS dentist according to new figures that show the Department of Health is meeting government targets to recruit and train more dentists in England.

New working group focuses on children with diabetes
 Significant improvements have been made by the NHS in providing services for people with diabetes, according to a new report.

Drug Info Zone [see more](#) | [edit news feed](#)

Campaign launched to raise awareness of alcohol link to mouth cancer
 Too few people are aware that heavy drinking can cause mouth cancer, says a new survey by Cancer Research UK to mark the launch of an official awareness campaign.

Consulting an NHS dentist is getting easier
 More patients will now be able to consult an NHS dentist according to new figures that show the Department of Health is meeting government targets to recruit and train more dentists in England.

New working group focuses on children with diabetes
 Significant improvements have been made by the NHS in providing services for people with diabetes, according to a new report.

Primary Care Current Awareness Service [see more](#) | [edit news feed](#)

Campaign launched to raise awareness of alcohol link to mouth cancer
 Too few people are aware that heavy drinking can cause mouth cancer, says a new survey by Cancer Research UK to mark the launch of an official awareness campaign.

Consulting an NHS dentist is getting easier
 More patients will now be able to consult an NHS dentist according to new figures that show the Department of Health is meeting government targets to recruit and train more dentists in England.

New working group focuses on children with diabetes
 Significant improvements have been made by the NHS in providing services for people with diabetes, according to a new report.

Keep informed

Website

<http://www.library.nhs.uk/corecontent>

Discussion list

www.mailbase.org.uk/lists/core-content